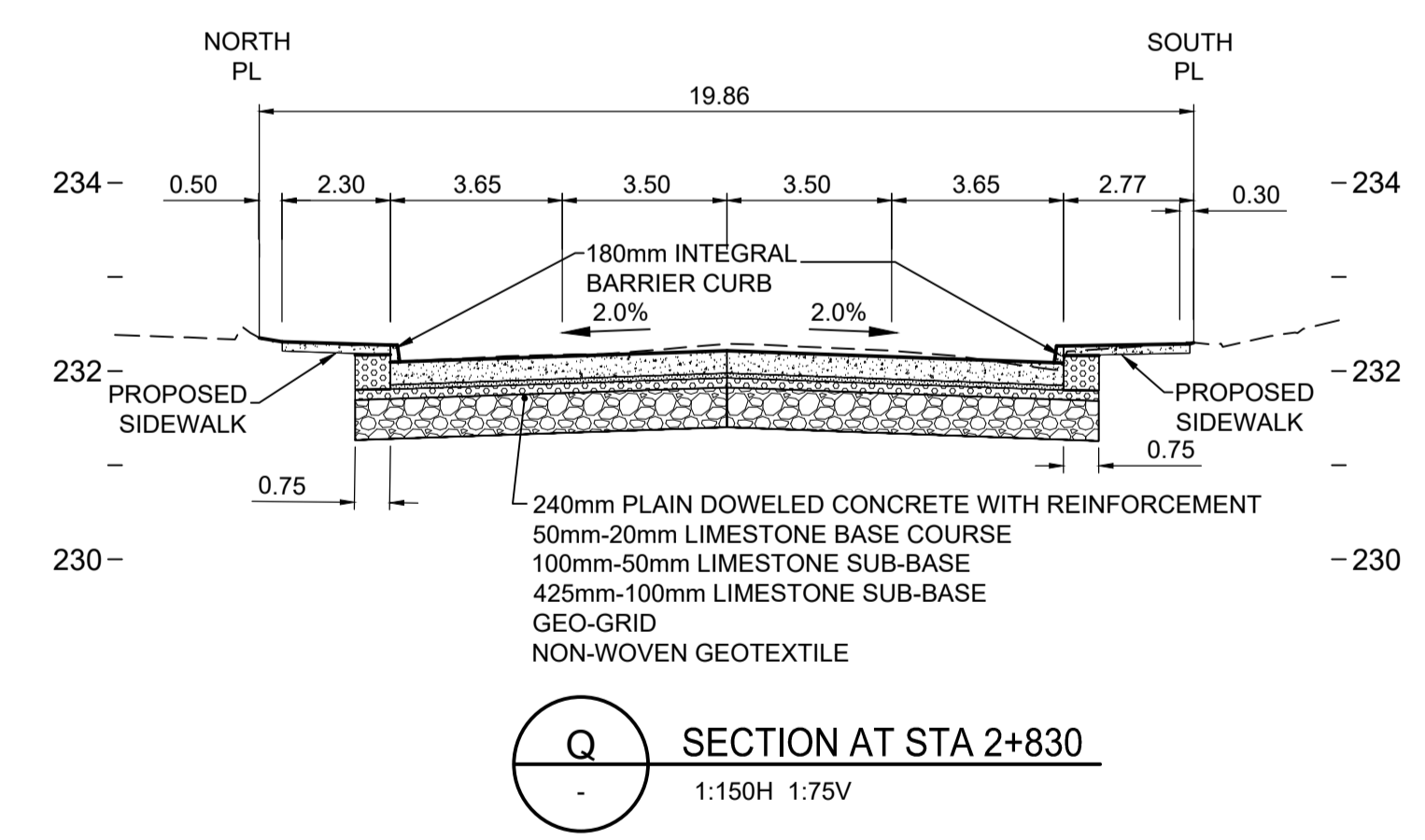
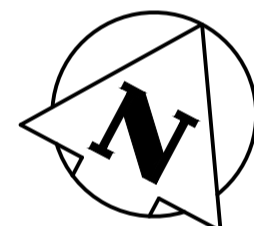
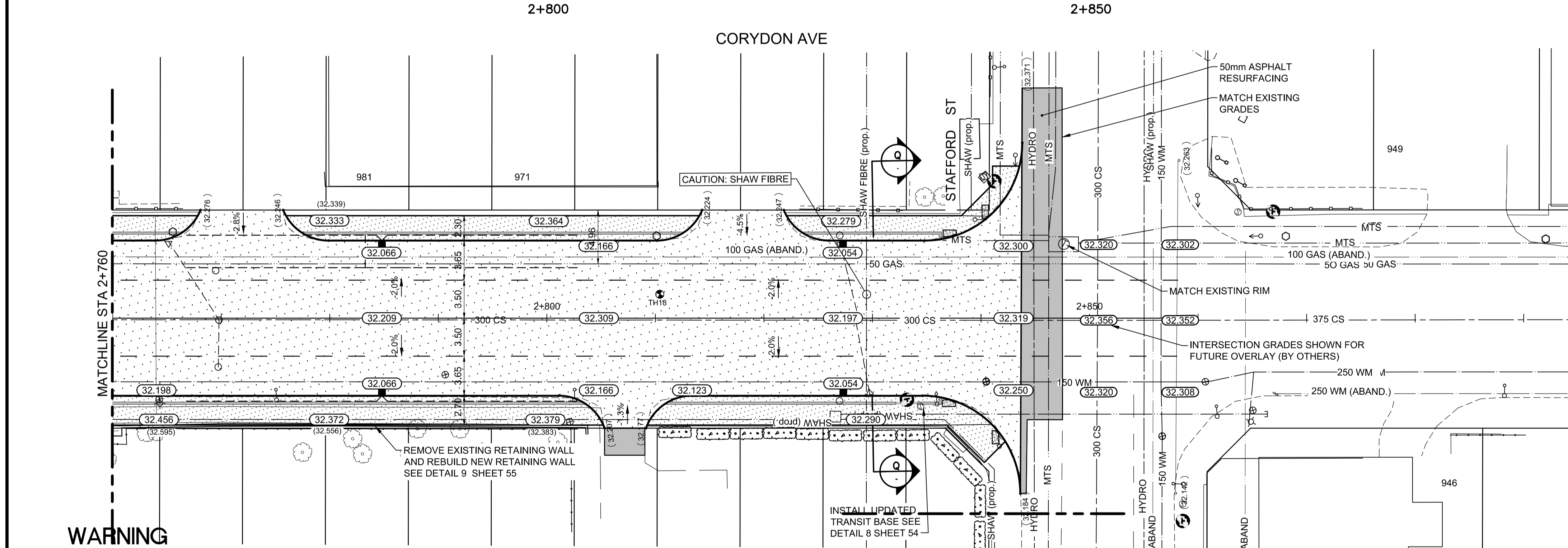


- NOTES:
- ADJUST EXISTING MANHOLES AS REQUIRED.
 - ADJUST EXISTING VALVE AS REQUIRED.
 - FOR CB'S LEADS AND UNDERGROUND INFO SEE SHEET 24 TO 29.
 - INSTALL SUB-DRAINS AS PER PLAN DRAWINGS AS PER SD-245 c/w CAPPED ENDS.
 - PRIVATE APPROACHES ARE 200mm REINFORCED CONCRETE WITH 75mm BASE COURSE, 225mm-50mm SUB-BASE AND NON-WOVEN GEOTEXTILE.
 - RETAIN EXISTING SUB-BASE AND REPLACE CONCRETE SLABS ONLY WHERE PUBLIC LANES, MEDIAN OPENINGS, AND LOCAL STREET TIE-INS WERE RECENTLY RECONSTRUCTED, AS DIRECTED BY THE CONTRACT ADMINISTRATOR.
 - REFER TO TENDER SPECIFICATIONS FOR CONSTRUCTION REQUIREMENTS WORKING ON OR NEAR EXISTING GAS MAINS OR SERVICES.
 - REFER TO TENDER SPECIFICATIONS FOR CONSTRUCTION REQUIREMENTS FOR WORKING ON OR NEAR EXISTING 900 FEEDERMAIN.
 - BLUE PAVERS INSET IN SIDEWALK TO BE CONSTRUCTED AT EACH TRANSIT STOP AND WETSET CLAMP AS PER DETAIL ON SHEET 55.
 - BULLNOSES, APPROACH AND INTERSECTION RADII ARE TO BE INTEGRAL MODIFIED BARRIER CURB.
 - THURSO ST. TO STAFFORD ST. - ONLY STATIC COMPACTION PERMITTED FOR 100mm SUB-BASE.
 - THURSO ST. TO STAFFORD ST. - SUB-CUTTING UNSUITABLE SUB-GRADE MAY NOT BE FEASIBLE DUE TO ABUNDANCE OF GAS SERVICES, GAS MAIN AND WATER SERVICES. CONTRACTOR TO USE SUITABLE EQUIPMENT AND METHODS.
 - GAS ELEVATIONS ARE SHOWN FOR GENERAL GUIDANCE ONLY. CONTRACTOR IS RESPONSIBLE FOR CONFIRMING ALL ELEVATIONS AND LOCATIONS.



WARNING

IF POWER EQUIPMENT OR EXPLOSIVES ARE TO BE USED FOR EXCAVATION ON THIS PROJECT THE CONTRACTOR MUST:

- NOTIFY THE GAS COMPANY OF THE PROPOSED LOCATION OF EXCAVATION.
- TAKE PRECAUTION TO AVOID DAMAGE TO GAS COMPANY INSTALLATIONS.

SEE PROVINCIAL REGULATION 140/92 FOR DETAILS

METRIC

WHOLE NUMBERS INDICATE MILLIMETRES
DECIMALIZED NUMBERS INDICATE METRES

150 WM	WATERMAIN	150 WM	HYDRO	150 WM	HYDRO	150 WM	HYDRO	150 WM	HYDRO	150 WM	HYDRO	150 WM	HYDRO
	HYDRANT		VALVE		CONCRETE		ASPHALT		SIDEWALK		ASPHALT MILL & FILL		STREET LIGHT
	LAND DRAINAGE SEWER		WASTE WATER SEWER		MANHOLE		CATCH BASIN		CURB INLET/CATCH PIT		TRANSIT STOP		GAS
	PROPERTY LINE		LEGEND-PLAN		EXISTING		PROPOSED		EXISTING		PROPOSED		EXISTING
	LEGEND-PROFILE		PROPOSED		EXISTING		LEGEND-PROFILE		PROPOSED		EXISTING		LEGEND-PROFILE

LOCATION APPROVED UNDERGROUND STRUCTURES

SUPV. U/G STRUCTURES COMMITTEE DATE

NOTE:
LOCATION OF UNDERGROUND STRUCTURES AS SHOWN ARE BASED ON THE BEST INFORMATION AVAILABLE BUT NO GUARANTEE IS GIVEN THAT ALL EXISTING UTILITIES ARE SHOWN OR THAT THE GIVEN LOCATIONS ARE EXACT. CONFIRMATION OF EXISTENCE AND EXACT LOCATION OF ALL SERVICES MUST BE OBTAINED FROM THE INDIVIDUAL UTILITIES BEFORE PROCEEDING WITH CONSTRUCTION.

NO.	REVISIONS	DATE	BY
0	ISSUED FOR TENDER	20.02.14	S.R.S.

Stantec
500 - 311 Portage Avenue, Winnipeg MB Canada
www.stantec.com

DESIGNED BY: D.C.P. CHECKED BY: R.K.H.
DRAWN BY: R.S. APPROVED BY: S.R.S.

HOR. SCALE: 1:250
VERTICAL: 1:10

RELEASED FOR CONSTRUCTION: DATE

ENGINEER'S SEAL

PRELIMINARY DRAWING

NOT TO BE USED FOR CONSTRUCTION

CONSULTANT DRAWING NO. C-215

THE CITY OF WINNIPEG
PUBLIC WORKS DEPARTMENT
ENGINEERING DIVISION

2019-2023 STAFFORD/TAYLOR/CORYDON
TENDER 1
CORYDON AVENUE
STA 2+760 TO STA 2+875
ROADWORKS - RECONSTRUCTION

SHEET 20 OF 55
CAD FILE DRAWING NUMBER 08020c-212-932.dwg
CITY DRAWING NUMBER P-3524-20